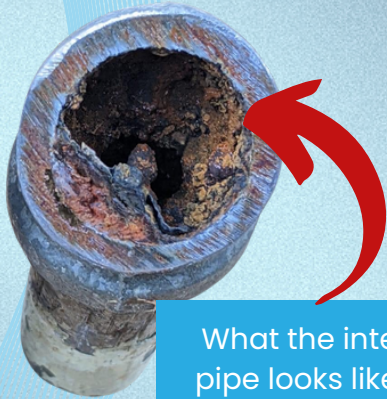


Water Supply Lines

Galvanized Steel



What the interior of pipe looks like - age related corrosion creates restricted flow.



Galvanized Steel Water Supply Lines (dull gray/silver): Commonly installed in homes built before 1960. Based on its age alone, be aware that this material has exceeded its intended design life and will need to be replaced soon.

Signs & symptoms of old water lines:

- Discoloration of water (brownish)
- Low water pressure/volume
- Leaks and related water damage

Even if not leaking, the interior corrosion causes restricted water flow and discoloration.

Not only will the lines in the house need to be replaced, but also the line running underground to the water meter - typically out by the sidewalk.



Deterioration and slow leaks are commonly seen at joints.

